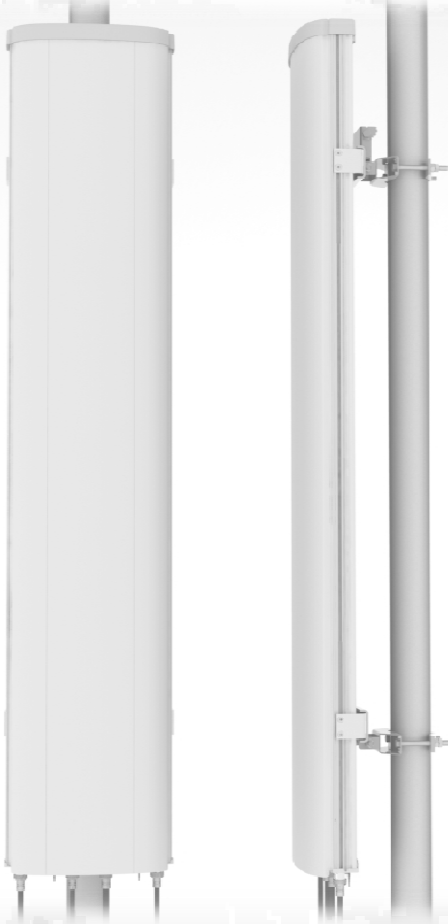


CMA-BDHH/6521/E0-6

GSM / CDMA: 1800, 1900 & 2100



Electrical specification:

Frequency range	1800:	1710-1880 MHz
	1900:	1850-1990 MHz
	2100:	1920-2170 MHz
Polarization		2 x Dual linear 45°
Gain	1800:	4 x 20.4 dBi
	1900:	4 x 20.8 dBi
	2100:	4 x 21.3 dBi
Horizontal = 3 dB beamwidth		65° 3°
Vertical = 3 dB beamwidth	1800:	4.6° 0.3°
	1900:	4.2° 0.2°
	2100:	3.9° 0.3°
Adjustable electrical downtilt		0° -6°
VSWR		<1.5:1
Horizontal beam peak		0° 3°
Horizontal tracking within 60°		<2 dB
Isolation between inputs		>30 dB
Front to back ratio		>25 dB
First upper sidelobe suppression		>18 dB
First nullfill below horizon		<20 dB
Cross-polar discrimination		>20 dB
Inter modulation, IM3 (GSM)		>153 dBc@2x43 dBm
Inter modulation, IM7 (UMTS)		>163 dBc@2x43 dBm
Antenna Efficiency*		92 %
Nominal impedance		50 Ω
Max power per input		500 W

Mechanical specification:

Connectors		4 x 7/16 female
Connector position		Bottom
Lightning protection		DC grounded
Height/Width/Depth mm		2060 (81) / <403 (15) / <133 (5,2)
Antenna weight		28 kg (62 lb)
Wind load at 42 m/s (94 mph) :	Frontal	1098 N (246 lbf)
	Lateral:	274 N (61 lbf)
	Rear:	1280 N (287 lbf)
Survival wind speed		60 m/s (134 mph)
Colour radome		Light Grey, RAL 7035
Radome material		ASA

Mounting hardware:

Mounting bracket		2
Bracket weight (complete)		5,6 kg (12 lb)
Pole diameter		45-120 mm (1.8-4.7 in)
Tilt bracket		0°-5° mechanical

